


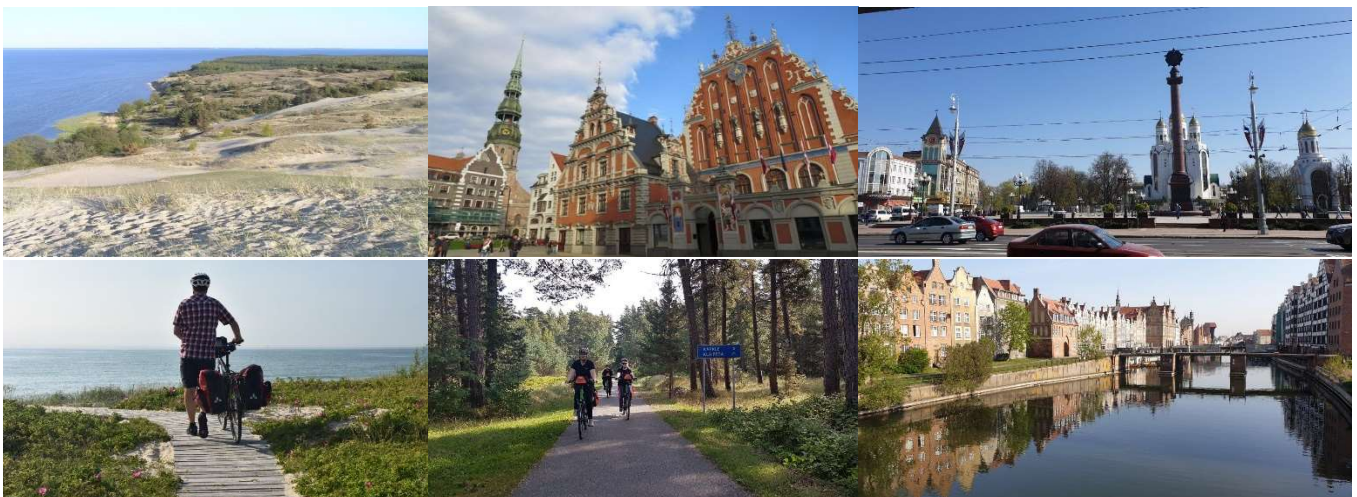
FOUR COUNTRIES SELF-GUIDED CYCLING ALONG THE BALTIC COAST: LATVIA - LITHUANIA – RUSSIA (Kaliningrad) – POLAND

11 days self-guided cycling tour from Riga to Gdansk (Code: SG8x)

|  | TOUR CODE: | Language | TOUR STARTS** | TOUR ENDS | PRICE PER PERSON IN EUR: |
|---|------------|----------|---------------|--------------|--------------------------|
| | | * | (Sunday) | (Wednesday) | |
| | 21/SG8x-1 | EN | June 6 | June 16 | DBL 1125 SGL 1495 |
| | 21/SG8x-2 | DE | July 4 | July 14 | DBL 1155 SGL 1545 |
| | 21/SG8x-3 | EN / DE | August 8 | August 18 | DBL 1155 SGL 1545 |
| | 21/SG8x-4 | EN | September 5 | September 15 | DBL 1125 SGL 1495 |

* Language of city guide/es: EN – English speaker, DE – German speaker
** This tour is available on any other dates May-September with min 6 people

Explore the Baltic coast of the four countries on very scenic routes. Travel from Latvia in the north, through Lithuania and across the Russian enclave of Kaliningrad into Poland in the south; experience a wide variety of towns, villages and countryside for an excellent introduction to the very distinct characters of these quite different countries. The tour includes the capital city Riga and former Hansa Cities - Kaliningrad (Koenigsberg) and Gdansk (Danzig), two of them having Old towns designated as World Heritage Sites by UNESCO; Lithuanian seaport of Klaipėda (Memel) and the Curonian Spit National Park, both Lithuanian and Russian parts. At the end of the tour you will have a chance to explore Nicolaus Copernicus town of Frombork, the Elblag Canal – a famous early technical masterpiece and impressive Malbork Castle, the biggest medieval brick structure in the world built by the Teutonic Knights, and finally Gdansk (Danzig) - Poland's principal seaport and a city with over 1000 years of history featuring beautiful old town with the country's biggest cathedral



The tour begins in Riga where you get your tour maps with detailed program and route description. Next day your rental bicycles will be ready for your first ride to Jurmala Resort. This trip is a half-guided tour ie during the whole trip, except Jurmala and Lithuanian part of the Curonian Spit, our driver with a minibus and bike trailer is close to you; and you can take part in city tours (Riga, Kaliningrad, Gdansk) lead by professional guides. Our driver will transport your luggage every day to the next hotel. If you have a breakdown, then our driver will take care of everything for you. If you have any problems – contact our office or the driver.

Cycling grade and conditions: *We rate this tour as moderate one. Daily biking routes mainly on low traffic roads and cycle paths range from 32 to 57 km (20-36 miles) each day with a possibility to cycle more kilometres on some days like Day 2 (along the Baltic coast in Jūrmala, Latvia), Day 6 (~30 km extra to finish the cycle ride in Kaliningrad, Russia) and Day 10 (instead of cruising Elblag Canal cycle ~50 km directly to Malbork in Poland). The terrain is dead flat most of the tour except a few gradual hills on the Curonian Spit in Lithuania and hilly coastal terrain in the Landscape Park of the Elblag Upland, Poland.*

Arrival / departure airports: Riga / Gdansk

ITINERARY

(cycling ~334 km/209 mi.)

Day 1 Sunday (Latvia): RIGA

Arrive in Riga. Individual transfer to the hotel (not included). Check-in at the hotel.

7:00 p.m. (19:00) welcome meeting at the hotel with Baltic Bike Travel representative.

OVERNIGHT: Riga; HOTEL: **AVALON****** or similar

Day 2 Monday (Latvia): RIGA & JURMALA Seaside Resort (cycling ~30 km/19 miles, by train or coach ~25 km)

After breakfast a guided tour of Riga Old Town, a medieval Hanseatic town famous for its Art Nouveau buildings. In the afternoon free time in Riga or cycling to Jurmala, the largest resort in the Baltic States well known for its long, white, sand beaches, mineral waters and mud with healing properties. We recommend that you take the opportunity to bath in the sea and try cycling along the beach – its well worth it! In the evening take a local train back to Riga (30 min; not included).

OVERNIGHT: Riga; HOTEL: **AVALON****** or similar

Day 3 Tuesday (Latvia-Lithuania): Hill of Crosses & LITHUANIAN SEASIDE Cycle Route (cycling ~35 km/22 miles, by coach ~290 km).

Transfer by minibus to the Lithuanian Seaside. En-route stop at the Hill of Crosses, the unforgettable sight of thousands of crosses on two small hills. Begin your cycle ride to Klaipėda on a beautiful bicycle path, which lies along the Baltic Coast in the Seaside Regional Park. En route pass Palanga, the well-known Lithuanian seaside resort. Enjoy a break here; perhaps visit the renowned Botanical Park, Amber Museum and the 470m pier heading out into the Baltic Sea. Check-in and optional dinner at the hotel.

OVERNIGHT: Klaipėda; HOTEL: **OLD MILL***** or similar

Day 4 Wednesday (Lithuania): CURONIAN SPIT & NIDA (cycling ~57 km/36 miles)

After breakfast you cross the lagoon by ferry (not included) and start cycling on an asphalt bike path which takes you along the Curonian Spit to Nida, the most beautiful resort in Lithuania famous for impressive sand dunes, the Amber Gallery, etc. En route you can visit the Hill of Witches which houses almost a hundred whimsical wooden sculptures about Lithuanian legends scattered along a forest path. Or, if you prefer, watch a colony of grey herons and cormorants, explore the “Dead” sand dunes on foot, swim in the Baltic Sea or, simply relax, & take in the sun on golden beaches. Check-in and optional dinner at the hotel.

OVERNIGHT: Nida; HOTEL: **NERIJA***** or similar

Day 5 Thursday (Lithuania-Russia): CURONIAN SPIT - Russian Side (cycling ~ 56 km/35 miles)

Today’s bike trip leads you through the Russian part of the Curonian Spit to Zelenogradsk, a popular seaside resort with elegant old villas. En route explore the Baltic Coast with picturesque dunes, the “dancing” forest and an ornithological museum, known as the first in the world such kind of bird observation field station. The Curonian Spit is known as place where almost one million migrating birds “pass/stop off” each year.

Arrive in Zelenogradsk, **check-in at the hotel.**

OVERNIGHT: Zelenogradsk **or Kaliningrad**

Day 6 Friday (Russia): SVETLOGORSK Seaside Resort & AMBER TOWN Yantarny (~50 km/31 miles, by minibus 50 km) Minibus transfer to Svetlogorsk (formerly Rauschen founded in 1228) which is another traditional seaside Spa town with its impressive 60 meters high coastal cliffs. Today's cycling takes us through Sambian peninsula to Yantarny, the town named after Amber in Russian. This place is famous for its open pit amber mines where more than 500 tones of amber is produced annually. Enjoy picturesque countryside by cycling towards Kaliningrad on small roads framed with tree alleys. Finish the ride with a transfer to the next overnight place in Kaliningrad, **check-in and optional dinner at the hotel.**

OVERNIGHT: Kaliningrad; HOTEL: **KALININGRAD***** or similar

Day 7 Saturday (Russia): KALININGRAD (KÖNIGSBERG) – on foot and by minibus (no cycling)

After breakfast you may take part in a guided tour of Kaliningrad, a former German city of Königsberg, capital of East Prussia where Prussian kings were crowned. The city tour includes the King's Gate and the Königsberg Cathedral with a grave of Immanuel Kant, city fortifications and bastions, etc. Afternoon free to explore Kaliningrad on your own.

OVERNIGHT: Kaliningrad; HOTEL: **KALININGRAD***** or similar

Day 8 Sunday (Russia-Poland): Along GREEN VELO Route to Frombork (~32 km/20 miles, by minibus 50 km)

Morning transfer to Mamonovo where start cycling and crossing the Polish border. Continue cycling to Frombork following the newly established Green Velo cycle route along the Vistula Lagoon. Arrive in Frombork known as "The Jewel of Warmia" with an intriguing astronomical legacy. Traditionally a home of merchants, farmers and fishermen, Frombork's most illustrious inhabitant was the astronomer and mathematician Nicolaus Copernicus who lived and worked here as a priest. Check-in and optional dinner at the hotel.

OVERNIGHT: Frombork; HOTEL: **KOPERNIK***** or similar

Day 9 Monday (Poland): Hilly GREEN VELO Route & Elblag (cycling ~42 km/26 miles)

Cycle to Elblag along the picturesque coast of Vistula Lagoon (mainly flat terrain) or party on newly built asphalt cycle trail rolling through a Landscape Park of the Elblag Upland (hilly terrain). Arrive in Elblag town, a former Hanseatic Elbing founded by Teutonic Order and nowadays famous for its reconstructed Stare Miasto (the Old town). **Check-in at the hotel.**

OVERNIGHT: Elblag; HOTEL: **ELBLAG****** or similar

Day 10 Tuesday (Poland): the Elblag Canal – Malbork Castle & Gdansk (cycling ~ 32 km/20 miles, by minibus ~ 120 km)

Have a free day from cycling by taking a half day cruise on board of passenger ships along the Elblag Canal - the famous early technical masterpiece (not included) or cycle **to Buczyniec Ramp of the Elblag canal to explore** a winch which was used to lift boats 100 m up and across dry land before returning them back to the Canal above. In the afternoon transfer to Gdansk. En route stop in Marienburg (Malbork), the capital of Teutonic Knights, where the greatest European fortress from the Middle Ages is located (it needs a whole day to explore the castle, and you can come **here individually after the tour, by train 30 or 50 min. one way, not included**). Arrive in Gdansk, check-in at the hotel **and optional dinner at the hotel or local restaurant.**

OVERNIGHT: Gdansk; HOTEL: **DOM MUZYKA***** or similar

Day 11 Wednesday (Poland): Gdansk. Morning city tour of Gdansk (Danzig). End of the tour.

THE TOUR INCLUDES:

- 10 nights stay in hotels, including all taxes
- Breakfast daily
- Transfers as per itinerary by air-conditioned coach /minibus
- Luggage transport as per itinerary
- Guided city tours in Riga, Kaliningrad and Gdansk (any entrance fees are payable individually)
- Official invitation for Russian visa (since 2019, citizens of 53 countries can apply for eVisa to Kaliningrad District)
- Individual information package (city guides, maps, programme and route description)
- Emergency contact numbers for our English or German speaking representatives
- GPS tracks

THE TOUR DOESN'T INCLUDE:

- Arrival and departure transfers
- Lunches and dinners
- Bicycle rent
- Entrance fees
- Train tickets
- Ecological fee to the Curonian Spit National Park (Russian sides)
- Cruising Elblag Canal
- Russian visa
- Tips

OPTIONAL EXTRAS

A. TRANSFERS:

- Arrival transfer from Riga Airport by car for 1-3 people - 35 EUR per transfer
- Arrival transfer from Riga Airport by minibus for 4-7 people - 65 EUR per transfer
- Departure transfer by car for 1-3 people – 35 EUR per transfer (Gdansk Airport) or 30 EUR per transfer (Gdansk bus/train station)
- Departure transfer by minibus for 4-7 people – 69 EUR per transfer (Gdansk Airport) or 59 EUR per transfer (Gdansk bus/train station)

B. RENT

- Rental of trekking bicycle (*VDV, Kalkhoff*) with 24-speed Shimano derailleur gears & free-wheel, all supplied with a waterproof back pannier and handlebar bag with a plastic cover for GPS/smartphone (*Ortlieb*) and tachometer (1 x booking) – 99 EUR per person
- Rental of E-bike/Pedelec (*VDV, Kalkhoff*) with Bosch driving system, 8-speed Shimano Nexus hub gears & free wheel, equipped with waterproof back pannier and handlebar bag with a plastic cover for GPS/smartphone (*Ortlieb*) – 249 EUR per person
- Rental of a helmet (please send your head size in centimetres or helmet size: S, M, L, XL) – 10 EUR per person

C. MEALS:

- 5 dinners (3 courses with coffee/tea) package at the hotels or local city restaurants (1 x Klaipeda, 1 x Nida, 1 x Kaliningrad, 1 x Frombork, 1 x Gdansk) – 125 EUR per person

D. PRE/POST TOUR ACCOMMODATION:

Hotel in Riga AVALON* or similar**

SGL 89 EUR per room per night, including breakfast

DBL 99 EUR per room per night, including breakfast

Hotel in Gdansk DOM MUZYKA* or similar**

SGL 89 EUR per room per night, including breakfast

DBL 99 EUR per room per night, including breakfast

NOTES

- Discount for extra bed in double/twin room – 15 %
- Minimum group size on fixed departure dates – 4 people, any other dates May-September – 6 people.