

Island hopping in Estonia

The west seacoast and Islands of Hiiumaa, Saaremaa & Muhu

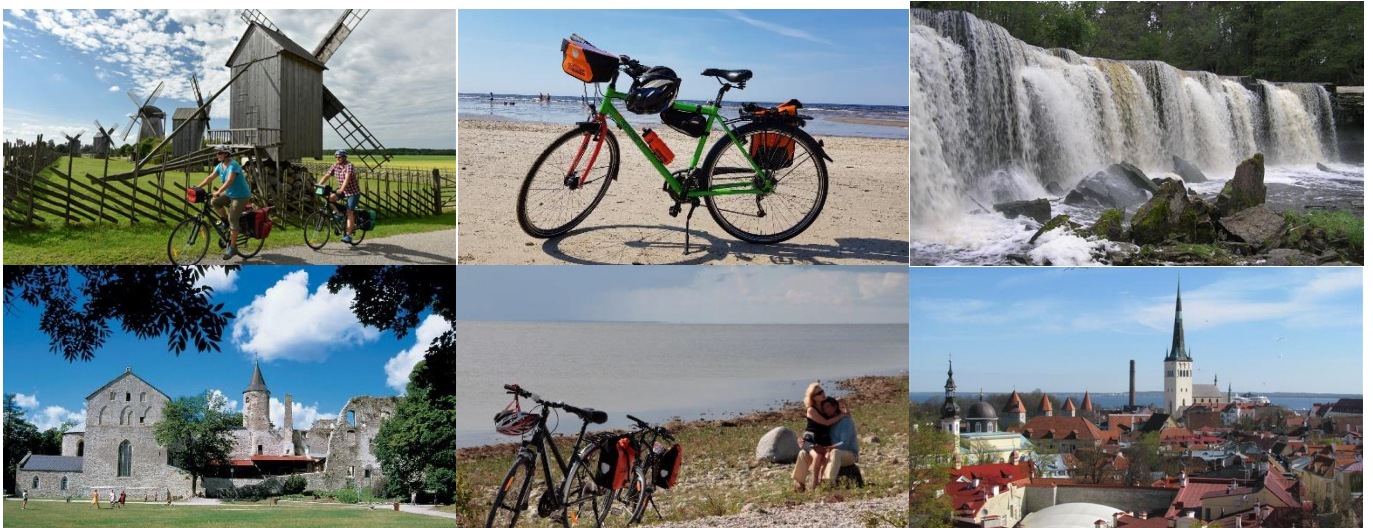
12 days self-guided bike tour from/to Tallinn (Code: SG9P)



Estonia is characterised by its unique natural landscapes and traditional hospitality. Vibrant cities, desert beaches, peace and the unspoiled beauty of the countryside - a paradise for cyclists. But it's the Estonian islands which are the jewels of the country. You'll spend your holiday on these islands which are amongst the most beautiful that the Baltic Sea has to offer. Lighthouses and windmills are the landmarks of these islands. To begin your journey, you will get to know the Estonian capital Tallinn. This tour then takes you from Tallinn to Haapsalu via Padise, and further from Haapsalu to the second largest island, Saaremaa. En route

back to the mainland, you'll cycle on the island of Muhu & from there into the summer capital of Estonia, Pärnu.

The tour can be started in Tallinn all days from Sunday to Wednesday. No luggage transfers are available on this route.



CYCLING ITINERARY (cycling ~463 km/288 mi., ferry 44 km/28 mi., bus ~2 hrs)

Day 1: Arrive in Tallinn

Individual arrival in Tallinn and transfer (not included) to your hotel (4*) for overnight stay.

Day 2: Tallinn – Padise, ~65 km/41 mi.

Collect your bikes and start cycling out of Tallinn on the EuroVelo route along the northern seacoast. En route you can explore Rocca al Mare Open Air Museum, Türisalu Cliffs, Keila-Joa Waterfall, Padise Manor House and monastery ruins. Overnight at tourism farm in Padise.

Day 3: Padise – Haapsalu, ~55 km/35 mi.

Explore Padise monastery ruins before starting to cycle on small asphalt roads with little traffic, but many forests and meadows. Arrive in Haapsalu, a traditional summer resort, with its picturesque small, wooden houses, castle ruins and beautiful sea promenade. Overnight at 3* hotel in Haapsalu.

Day 4: Hiiumaa Island, ~38 km/24 mi.

Cycle to Rohuküla (10 km) to catch a ferry to the beautiful Estonian island of Hiiumaa (22 km/1.5 hrs). Continue cycling to Kärdla, a “capital city”, where you’ll stay overnight at a guesthouse in Kärdla.

Day 5: Kassari & Saaremaa Island, ~55 km/34 mi.

Enjoy the ride across Hiiumaa Island’s wild beauty which is known as a nature lovers’ paradise. Also you can visit an old wool factory or the Hiiumaa museum in Kaasari. Then your route goes to Sõru harbour and you’ll continue by ferry to Saaremaa Island (15 km/1hr). Overnight at tourist farm nearby Leisi.

Day 6: Across Saaremaa Island to Kuressaare, ~51 km/32 mi.

Today’s cycle route passes the Angla windmills and the Kaali meteorite crater, which is the most impressive natural monument in Estonia. Cycle to Kuressaare (overnight), the capital of Saaremaa and home to the 13thC bishopric castle. Overnight at hotel in Kuressaare.

Day 7: Kuressaare

Free day in Kuressaare for exploring the bishopric castle, cycle to Järve beach and sand dunes - popular place for swimming and sun bathing, or take a longer ride to Sõrve peninsula which is very interesting for nature lovers, hikers and swimmers. Transfer to Sõrve peninsula one way is for extra charge. Overnight at hotel in Kuressaare.

Day 8: Koguva & Muhu Island, ~78 km/49 mi.

Cycle on secondary roads and a 3 km long dam connecting the islands of Saaremaa and Muhu. En route to Koguva village you can stop to see the Maasi fortress ruins, small windmills, an ostrich farm and you can also make time to taste/buy homemade bread. Overnight at tourist farm in Koguva.

Day 9: Along the Western Seacoast, ~51 km/32 mi. (20 km + 0.5h ferry + 31 km)

Continue the tour through Muhu Island to Kuivastu harbour, take a ferry (7 km/25 min) to the mainland and cycle along the coast through a nature reserve to Varbla. Overnight at hotel in Varbla.

Day 10: Varbla – Pärnu Resort, ~70 km/44 mi.

Your last cycling day will follow the seaside road passing a golf course and the sandy Valgeranna beach. Arrive in Pärnu - Estonia’s summer capital & seaside resort, famous for its cultural life, many green parks, sandy beaches, etc. Overnight at 3* hotel in Pärnu.

Day 11: Pärnu – bus to Tallinn

After breakfast leave your bikes at the hotel and take a public bus or private car transfer (not included) to Tallinn. Free time to explore the capital city of Estonia. Overnight at 4* hotel in Tallinn.

Day 12: Tallinn – end of the tour

Free time in Tallinn.

TOUR INFORMATION

Cycling grade: We grade this trip as easy to moderate. Daily signposted biking routes, mainly on roads with little traffic and cycle paths in towns, ranging from 38 to 78 km (24-49 miles) each day. The terrain is mainly flat, but in some places varied and rolling with some gradual hills, for example, between Tallinn and Padise. Three ferries between the Estonian islands and one bus journey from Pärnu back to Tallinn are planned on this tour (pay locally).

Arrival & departure information

Airport: Tallinn (www.tallinn-airport.ee)

Ferry terminal: Tallinn (regular ferry lines from Helsinki (FI) & Stockholm (SE))

ACCOMODATION

2-4* or 3-4* star hotels, guesthouses and tourist farms

2025 TOUR DATES

Daily from Sunday to Wednesday May-August, 2025

TOUR PRICES (per person), with 2*/4* hotel in Kuressaare

Double/twin room per person 1075 EUR / 1225 EUR

Single room 1725 EUR / 1875 EUR

THE TOUR PRICE INCLUDES:	THE TOUR PRICE EXCLUDES:
- 11 nights stay at the hotels/guesthouses/tourist farms (rooms with WC/shower),	- Arrival and departure transfers
- Breakfast on days 2-12	- Lunches & dinners
- 24 hours emergency hotline	- Cycle rent
- Individual information package with maps and route description (one paper copy per room) or electronic GPS tracks	- Luggage transport (not possible on this route)
	- Train/bus tickets
	- Tips

Optional extras:

- Rent of trekking bike for 9 days - 165 EUR**
- Rent of E-bike/Pedelec for 9 days - 285 EUR**
- Rent of gravel bike (Merida Silex 300, 1 x 11 speeds) equipped with a back rack for 9 days - 185 EUR**
- Rental of a pair of waterproof back panniers (2 x 20 litres) - 30 EUR
- Pre/post-tour accommodation with breakfast in Tallinn 4* (price per room per night)
 - Double/twin room - 129 EUR
 - Single room - 119 EUR
- Arrival/departure transfer from/to Tallinn airport (price per transfer one way, 20% surcharge for late and early hours from 23:00-07:00):
 - by car up to 3 people - 49 EUR
 - by minibus up to 7 people - 65 EUR

**** included extra equipment and services:** repair set with spare inner tubes (one repair set per booking) + waterproof handlebar bag with a map/smartphone holder (Ortlieb) + collection of bikes at the hotel or bike rental centre in Tallinn/dropping off the bikes at the hotel in Pärnu

Notes:

- Discounts for extra bed in double/twin room - 15 %
- Minimum group size – 1 person